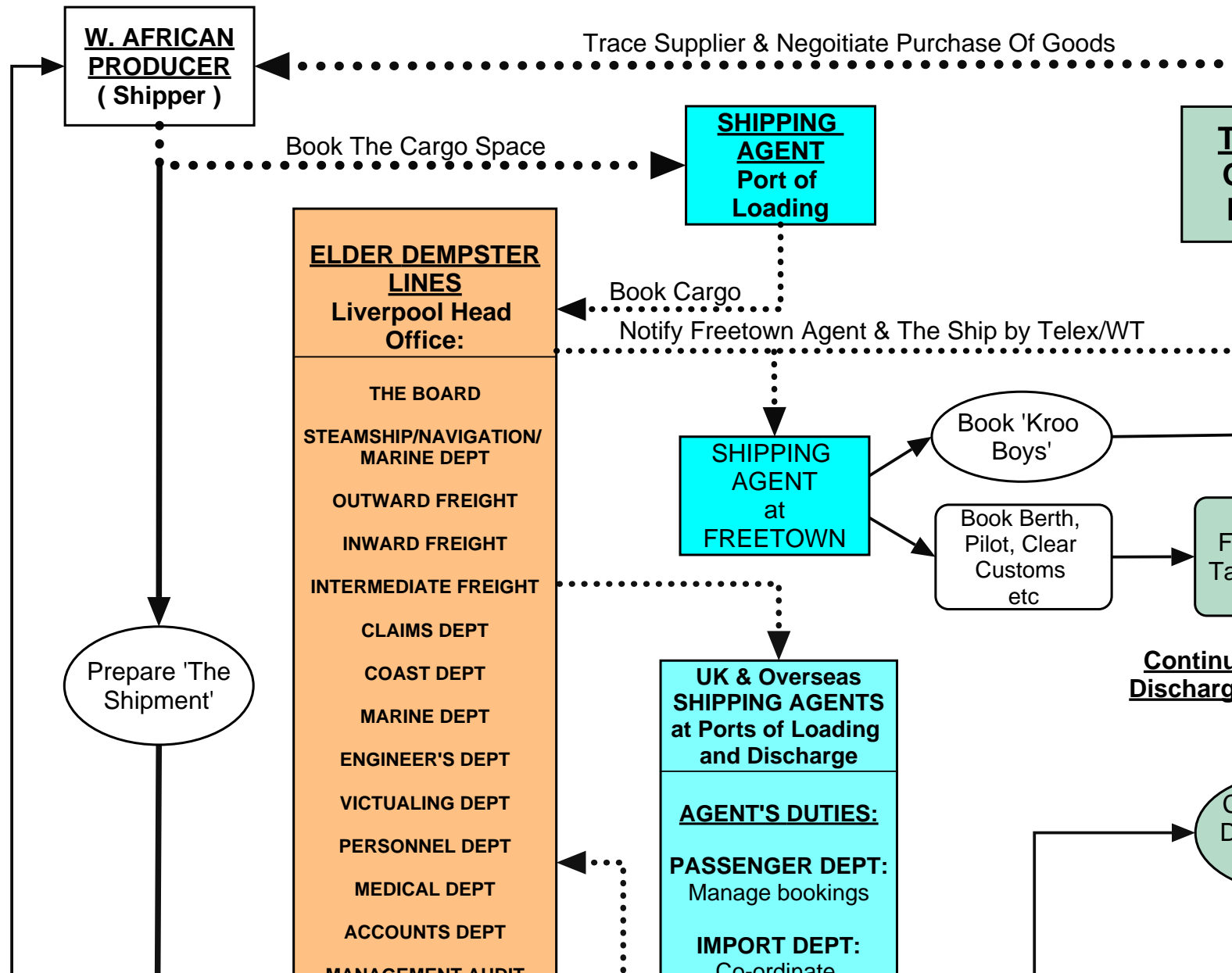
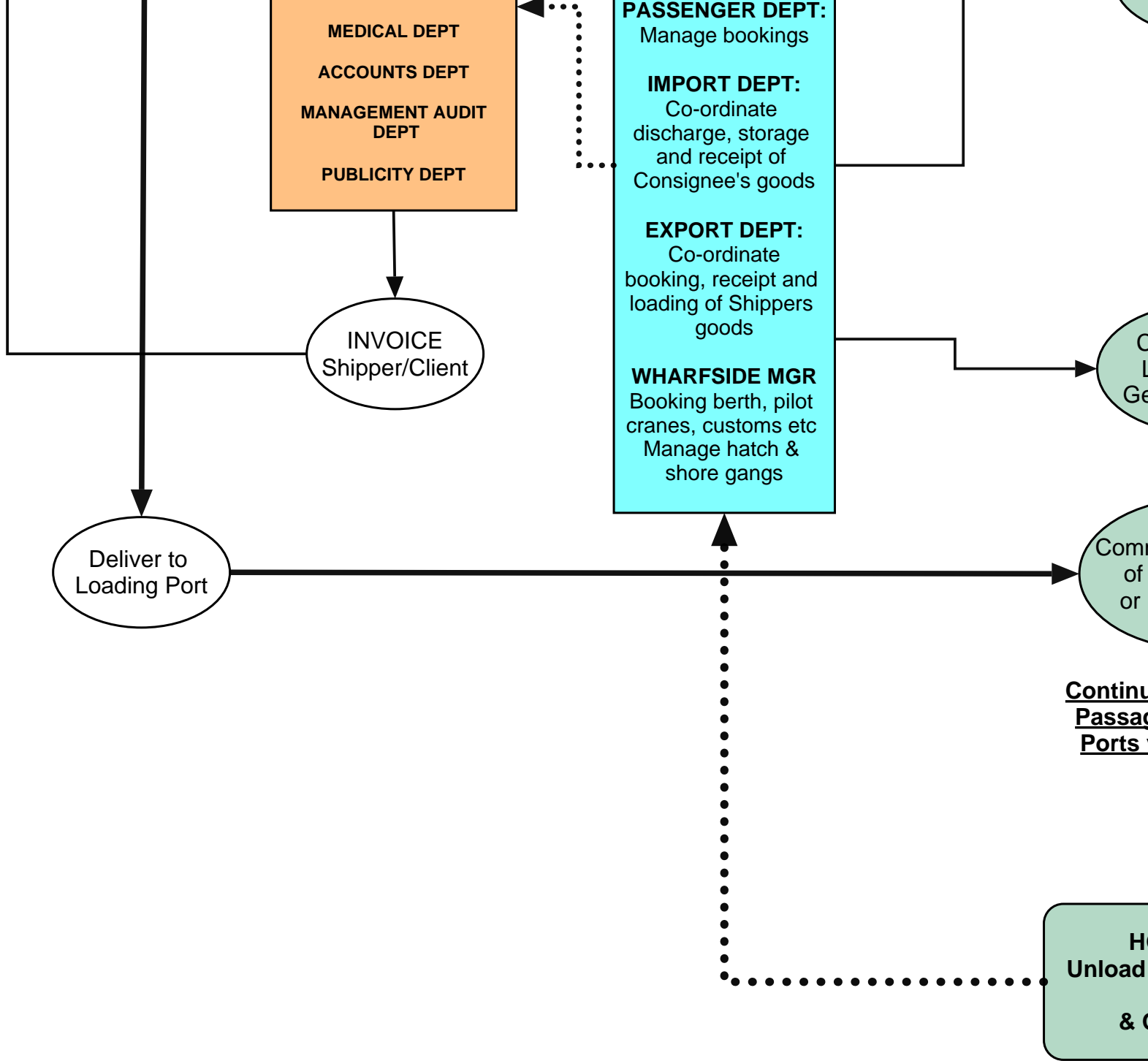


'THE ANATOMY OF A VOYAGE' - (General & Bulk Liquid Cargoes: Pa





AGE' - THE SHIPPING PROCESS
Types: Palm Oil/Ground Nut Oil/Latex)

UK/USA
END USER

START
HERE

THE SHIP
Outward
Passage

WT

Call at
FREETOWN
 Take on 'Kroo
 Boys'

Crew Overhaul
 Derricks & Cargo
 Running Gear

Organise 'Kroo
 Boys' - Rig
 Tent etc.

Continue on Passage to
Discharge & Loading Ports

Commence
 Discharge of
 Cargo

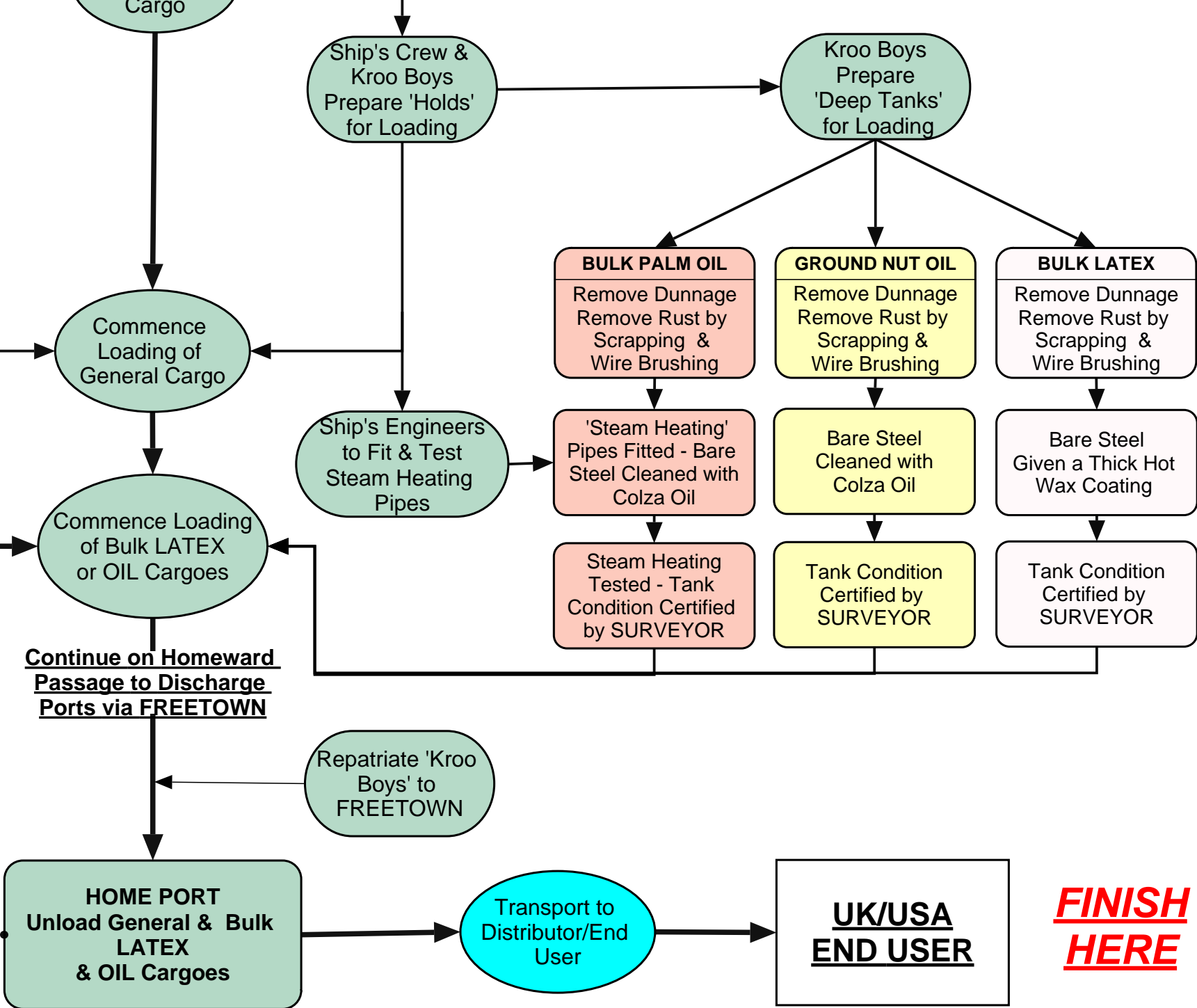
General Ship
 Maintenance by
 Ship's Crew &
 Kroo Boys

Ship's Crew &
 Kroo Boys
 Prepare 'Holds'

Kroo Boys
 Prepare
 'Deep Tanks'

ELDER DEMPSTER AGENCIES
LTD.
(Elder Dempster's Own Agents)

LAGOS	TAKORADI
IBADAN	CAPE COAST
SAPELE	KUMASI
ENUGU	WINNEBA
PORT HARCOURT	FREETOWN
KANO	BATHURST
CALABAR	ABIDJAN
ACCRA	DOUALA



***FINISH
HERE***