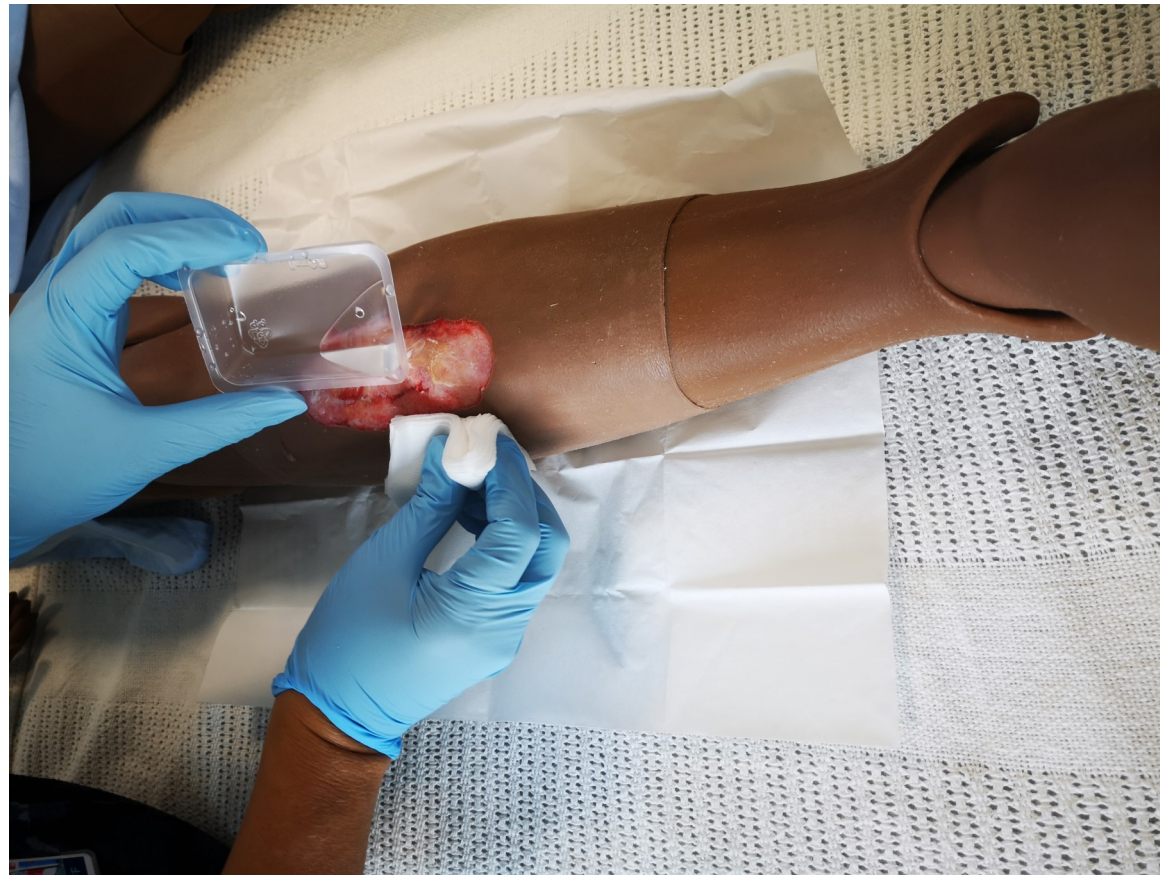


Step-by-step guide

Wound ANTT



Gather your equipment



Procedure

Explain the Procedure



Discuss the procedure with the patient. Explain what will happen.

Check patient identity

Gain consent

Ensure privacy and dignity is maintained throughout the procedure

Wash Hands

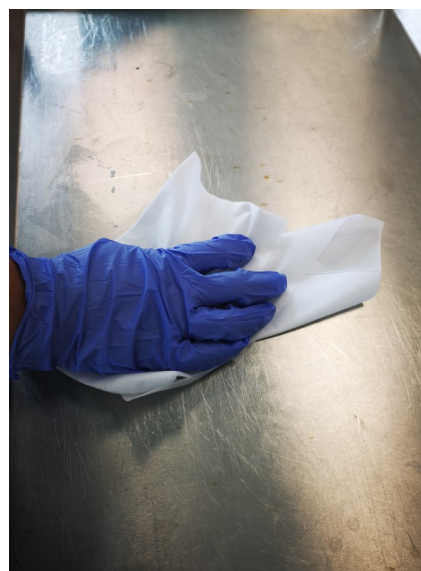


Wash hands

Apply appropriate PPE

Ensure all equipment is clean prior to use

Clean Trolley



The trolley or tray should be cleaned and allowed to dry before use. Refer to trust policy.

Clean from the bottom to the top, back to front including legs/poles. Refer to trust policy.

Dispose PPE into clinical waste bin

Equipment



Depending on which procedure you are performing, gather the correct equipment.

Always checking the packaging is intact, and that expiry dates are valid.

Procedure

Equipment B



Place all equipment on the bottom/ lower shelf of the trolley.

Ensure patient is comfortable, ensure privacy and dignity are maintained at all times.

Hand hygiene and PPE



Put on an apron

Use soap and water or alcohol-based hand sanitiser to decontaminate hands

Open the sterile pack



Open the outside of the sterile pack and allow the contents to slide out onto the trolley.

Ensuring not to contaminate the clean surface of the trolley.

Hand hygiene



Use alcohol-based hand sanitiser to decontaminate hands

Procedure

Open the sterile field



Using either the outside of the paper or corner edges only, open the sterile field.

Ensuring not to contaminate the sterile field.

Further equipment



Open any other sterile equipment required onto the sterile field.

Take care not to contaminate the sterile field.

Hand hygiene



Use alcohol-based hand sanitiser to decontaminate hands

Arrange sterile field



You can use the clinical waste bag as a 'glove' or a pair of sterile forceps, to arrange the equipment on the sterile field.

Procedure

Inspect wound



Continue to use the waste bag as a 'glove' (non sterile gloves may also be worn for this part of the procedure, follow local trust policy)

Loosen the wound dressing and inspect the wound as per trust policy.

Remove the dressing and invert the waste bag, so the dressing is inside.

Waste bag



Attach the clinical waste bag, pulling the edge of the bag open so you can drop any waste in easily.

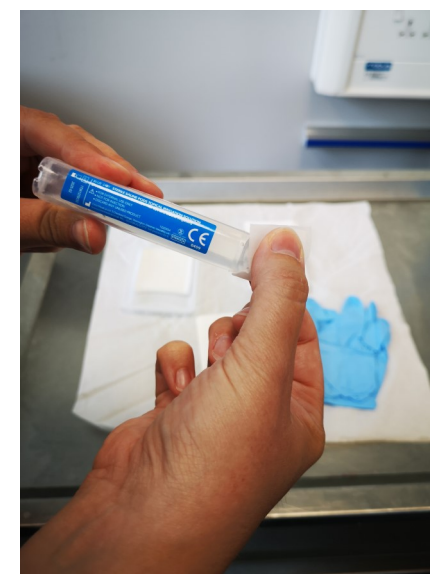
Ensure the bag is placed between you and the patient, ensuring you do not contaminate the sterile field by stretching across it.

Hand hygiene



Use alcohol-based hand sanitiser to decontaminate hands

Steripod



Clean the opening/neck of the normal saline with an alcohol prep wipe

Wait 30 seconds

Pour the normal saline into the gallipot ensuring not to contaminate the sterile field

Follow local trust policy

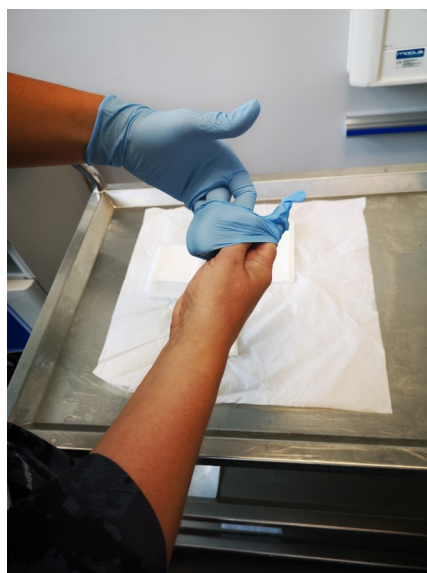
Procedure

Hand hygiene



Use alcohol-based hand sanitiser to decontaminate hands

Sterile gloves



Put on a pair of sterile gloves
Ensuring not to contaminate them

Irrigate the wound

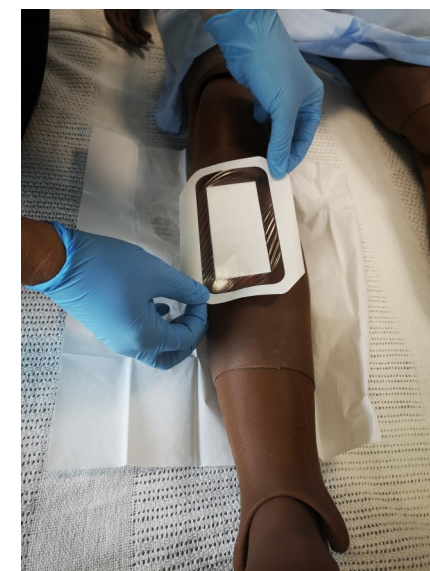


Place the sterile towel under or next to the wound

Irrigate the wound, dry the surrounding area/skin, use sterile gauze to dry around the outside of the wound

Follow local trust policy

Redress wound



Place the new dressing over the wound

The dressing pad is a key part, ensure this remains sterile by utilising a non touch technique

Follow local trust policy

Procedure

Dispose of waste



Dispose of all waste/PPE including sterile field into a clinical waste bag/bin.

Ensure patient is comfortable, buzzer and refreshments are to hand

Wash hands



Wash your hands with soap and water using ayilffe technique, follow local trust policy

Clean trolley



After use the trolley/tray must be cleaned using an alcohol based wipe or water and detergent. Please follow trust policy.

Documentation

WOUND ASSESSMENT TOOL		NAM
<p>heet to assess wound status. Evaluate each item by pic e score in the item score column for the appropriate date.</p> <p>te. Circle, identify right (R) or left (L) and use "X" to r ccyx ___ Lateral ankle ___ Medial ankle sity ___ Heel Other Site</p> <p>pattern; assess by observing perimeter and depth.</p> <p>riate description: ___ Linear or elongated ___ Bowl/boat gle ___ Butterfly Other Shape</p>		
Assessment		
<p>ngth x width <4 sq cm ngth x width 4--<16 sq cm ngth x width 16.1--<36 sq cm ngth x width 36.1--<80 sq cm</p>		

Document all care provided con-temporaneously

Discuss the plan of care with the patient